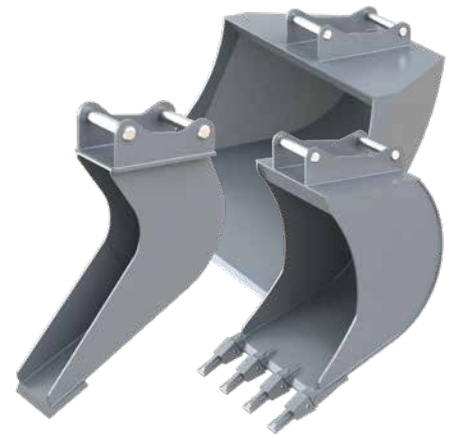


The Bucket Set KIT consists of a SKP grading bucket, a SKD general bucket and a SKK cable bucket. The single buckets are ideal for the use with a tiltrotator due to their design.

- ▶ **Low self-weight.**
- ▶ **Different adapters** available.
- ▶ **Bucket Set with adapter system L-Lock, Oilquick or Verachtert** available **without surcharge.**
- ▶ **Durable** due to robust construction and use of highly resistant wearout steel 400HB.



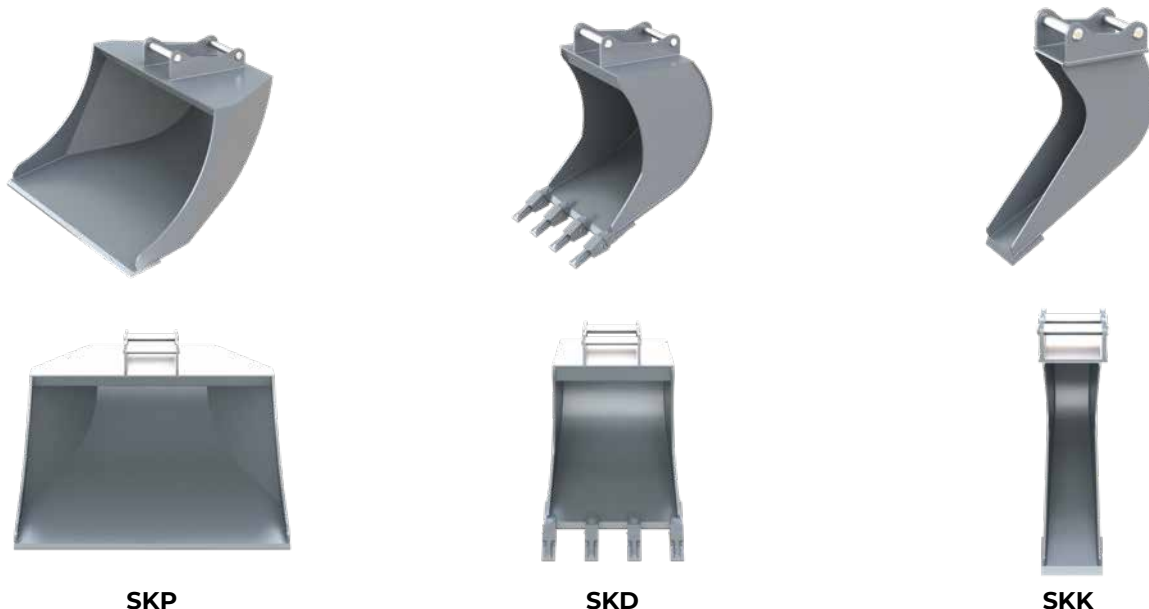
## Bucket Sets KIT (SKP/SKD/SKK)

Type	for NOX	Adapter	Bucket types	Width E (SKP / SKD / SKK) (mm)	Volume (SKP / SKD / SKK) (liter)	Weight (SKP / SKD / SKK) (kg)	Operating weight (t)
KIT 3-S40	TR06NOX / TR07NOX	S40	SKP 4 / SKD 4 / SKK 4	1100 / 620 / 300	160 / 120 / 60	100 / 80 / 50	3
KIT 4-S40	TR06NOX / TR07NOX	S40	SKP 4 / SKD 4 / SKK 4	1200 / 620 / 300	200 / 160 / 60	110 / 80 / 50	4
KIT 6-S40	TR06NOX / TR07NOX	S40	SKP 6 / SKD 6 / SKK 6	1300 / 720 / 300	300 / 280 / 160	130 / 140 / 75	6
KIT 6-S45	TR06NOX / TR07NOX	S45	SKP 6 / SKD 6 / SKK 6	1300 / 720 / 300	300 / 280 / 160	130 / 140 / 75	6
KIT 8-S45	TR11NOX	S45	SKP 10 / SKD 10 / SKK 10	1400 / 800 / 400	400 / 350 / 180	180 / 190 / 80	8
KIT 8-S50	TR11NOX	S50	SKP 10 / SKD 10 / SKK 10	1400 / 800 / 400	400 / 350 / 180	180 / 190 / 80	8
KIT 10-S45	TR11NOX	S45	SKP 10 / SKD 10 / SKK 10	1500 / 800 / 400	500 / 450 / 275	210 / 210 / 120	10
KIT 10-S50	TR11NOX	S50	SKP 10 / SKD 10 / SKK 10	1500 / 800 / 400	500 / 450 / 275	210 / 210 / 120	10

**Package consists of:** grading bucket, general bucket incl. teeth, cable bucket, adapter

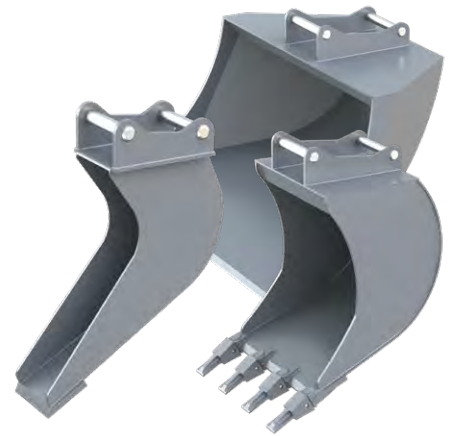
**Note:** adapters from other manufacturers or buckets without adapter on request

## Pictures



The Bucket Set KIT consists of a SKP grading bucket, a SKD general bucket and a SKK cable bucket. The single buckets are ideal for the use with a tiltrotator due to their design.

- ▶ **Low self-weight.**
- ▶ **Different adapters** available.
- ▶ **Bucket Set with adapter system L-Lock, Oilquick or Verachtert** available **without surcharge.**
- ▶ **Durable** due to robust construction and use of highly resistant wearout steel 400HB.



## Bucket Sets KIT (SKP/SKD/SKK)

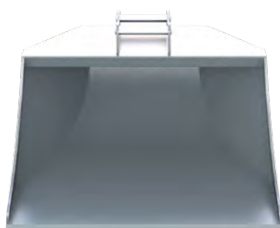
Type	for NOX	Adapter	Bucket types	Width E (SKP / SKD / SKK) (mm)	Volume (SKP / SKD / SKK) (liter)	Weight (SKP / SKD / SKK) (kg)	Operating weight (t)
<b>KIT 14-S60</b>	TR14NOX	S60	<b>SKP 14 / SKD 14 / SKK 14</b>	1600 / 900 / 400	600 / 600 / 275	390 / 350 / 120	14
<b>KIT 16-S60</b>	TR14NOX / TR19NOX	S60	<b>SKP 16 / SKD 16 / SKK 16</b>	1600 / 900 / 400	650 / 650 / 340	500 / 400 / 270	16
<b>KIT 18-S60</b>	TR19NOX	S60	<b>SKP 18 / SKD 18 / SKK 18</b>	1700 / 900 / 500	750 / 700 / 380	640 / 550 / 350	18
<b>KIT 20-S70</b>	TR25NOX	S70	<b>SKP 20 / SKD 20 / SKK 18</b>	1600 / 900 / 500	950 / 850 / 380	550 / 550 / 310	20
<b>KIT 22-S70</b>	TR25NOX	S70	<b>SKP 22 / SKD 22 / SKK 22</b>	1800 / 1000 / 500	1000 / 1100 / 380	670 / 850 / 310	22
<b>KIT 24-S70</b>	TR25NOX	S70	<b>SKP 24 / SKD 24 / SKK 24</b>	1800 / 1000 / 600	1200 / 1200 / 500	780 / 950 / 500	24

**Package consists of:** grading bucket, general bucket incl. teeth, cable bucket, adapter

**Note:** adapters from other manufacturers or buckets without adapter on request

## Pictures

**SKP**



**SKD**



**SKK**

