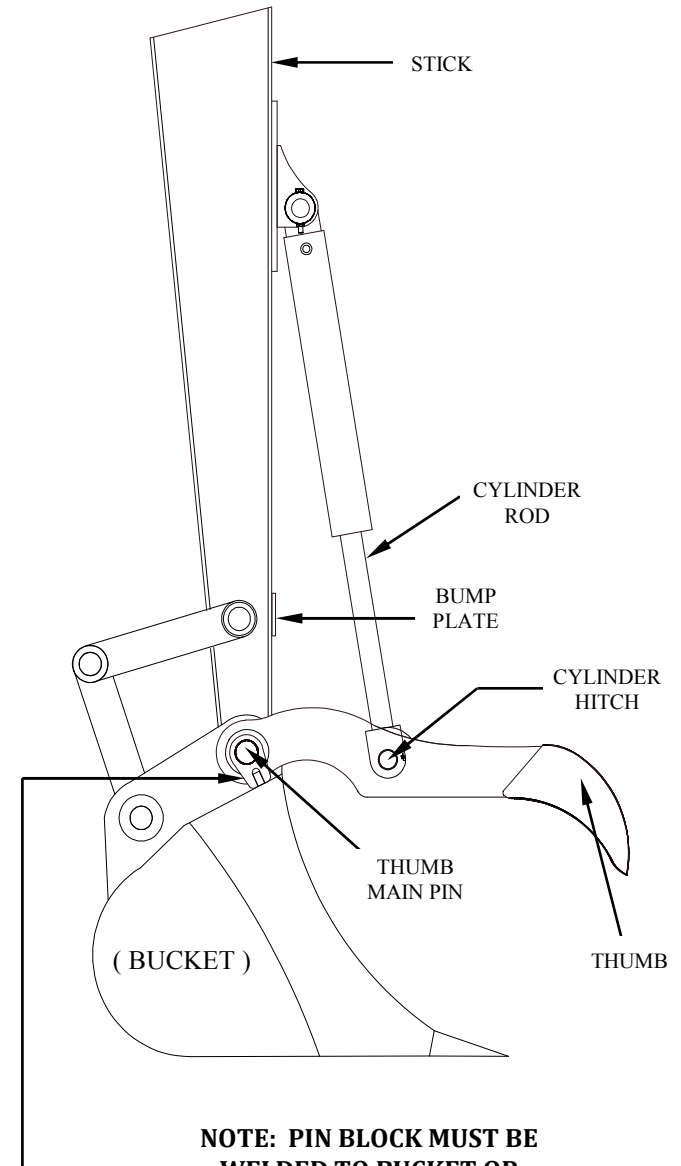


## HYDRAULIC THUMB

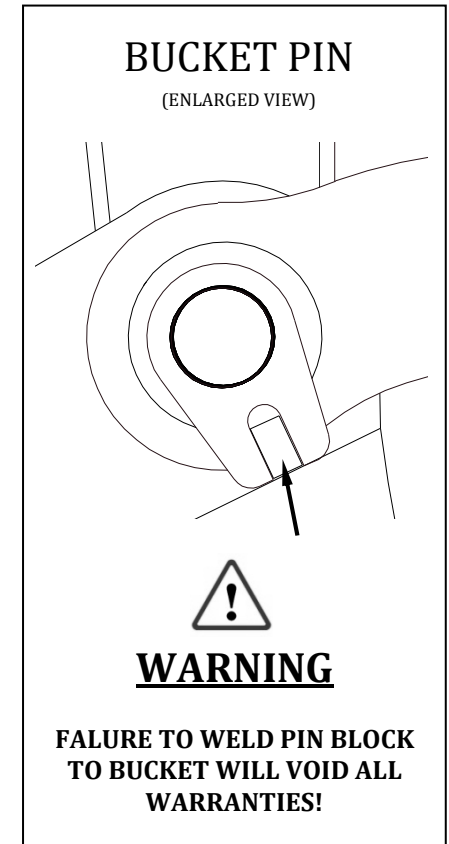
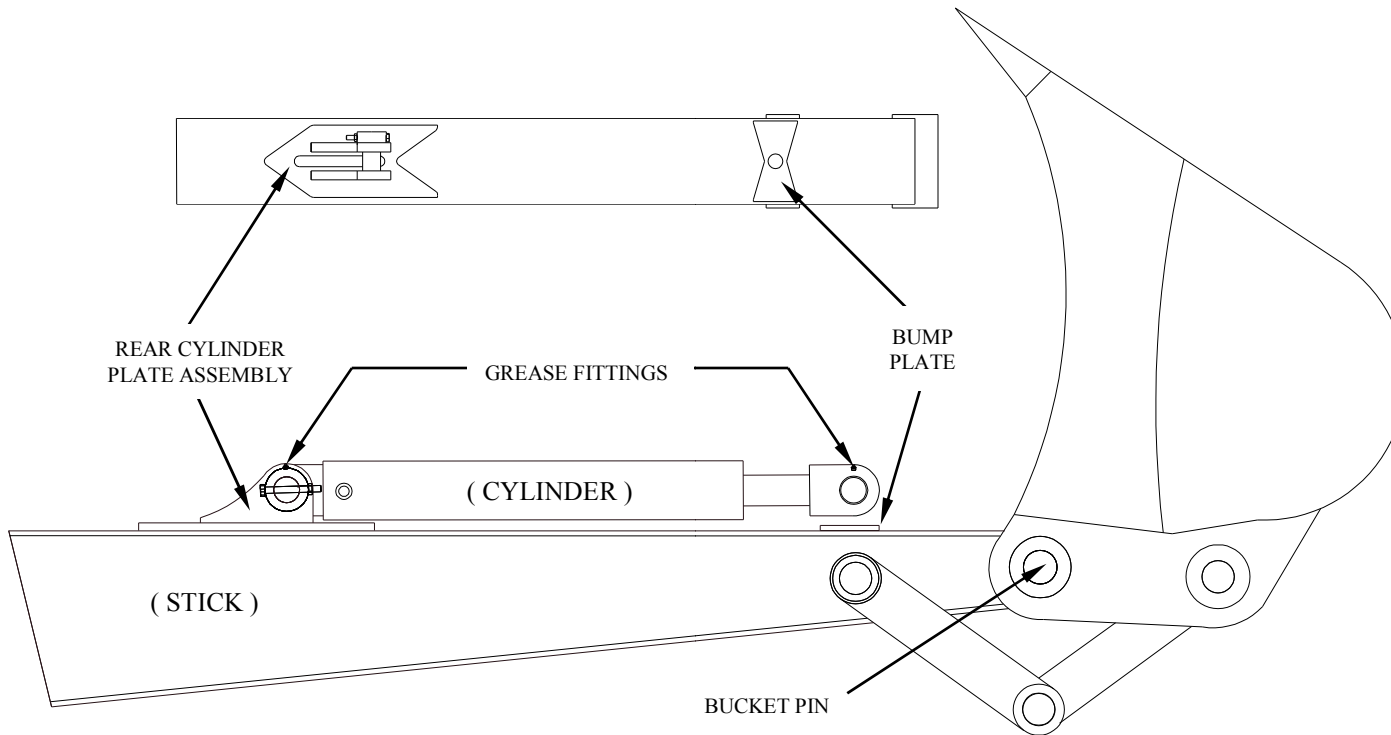
### INSTALLATION:

1. Fold stick until bottom faces upward as much as possible.
2. Remove main pin from bucket. Align thumb and bucket, then install *thumb* main pin. Include any spacers or washers needed to center thumb side to side on bucket. Place lock collar on end of pin and attach lock collar bolt and nut.
3. Roll thumb back on the stick in the *fold down* position. Ensure grease fittings are placed upward or away from stick for easy access. Extend cylinder rod 1/2". Fitting for the cylinder is a Code 614 bolt flange. Place *bump plate* under the cylinder/thumb connection on the stick. Only tack-weld the plate in place until rotation is checked.
4. Center the rear *cylinder plate* assembly and tack-weld it in place.
5. Extend cylinder rod until *cylinder hitch pin* hole aligns with *cylinder end bearing hole* and install *cylinder hitch pin*.
6. Retract cylinder until back of thumb touches *bump plate*. Ensure that there is no interference with this motion.
7. Rotate thumb toward bucket until cylinder rod is fully extended. Then rotate bucket toward thumb until thumb and bucket meet. Ensure that bucket does not touch thumb except at tooth and tip area.
8. Connect hydraulic hoses and check rotation of cylinder to make sure there is no interference with the bucket or the stick. **NOTE: Hoses or hydraulic kits are NOT included with purchase of thumb.**
9. Weld *base plate* and *bump plate* to machine with a 5/8" weld. Weld 3" and skip 3" on all sides of *both* plates. **Do NOT weld across stick!**
10. Rotate thumb toward bucket until cylinder rod is fully extended. Then rotate bucket toward thumb until thumb and bucket meet. Ensure that bucket does not touch thumb except at tooth and tip area.
11. Weld pin block to bucket. You may need to trim locking collar on thumb to fit with bucket. **FALURE TO WELD PIN BLOCK TO BUCKET WILL VOID ALL WARRANTIES!**
12. Before operating the thumb it is important to ensure that the hydraulic pressure coming to the cylinder is set at no more than 2500 PSI. If pressure is set higher than 2500 PSI the warranty will be VOID.
13. Make sure that the pressure relief valves are set to relieve anything over 2500 PSI. Not all machines have these so you may have to install them on your machine.



**NOTE: PIN BLOCK MUST BE WELDED TO BUCKET OR WARRANTY WILL BE VOID!**

# HYDRAULIC THUMB DIAGRAM



## CAUTION:

- Any deviation from installation instructions will automatically VOID the warranty.
- This thumb is designed to select and place materials in a horizontal position. Any other use of this attachment will be considered abuse and the warranty will be VOID.
- Any use of this thumb which results in applying backward pressure (such as back dragging) will VOID the warranty.
- If product is not paid for within 90 Days of purchase, warranty will be VOID.