



HYDRAULIC QUICK COUPLER



SAFETY
BY DESIGN

WWW.GEITH.COM

GEITH COUPLER

Achieve premium site safety and productivity with the industry's **proven** number one hydraulic coupler from Geith.

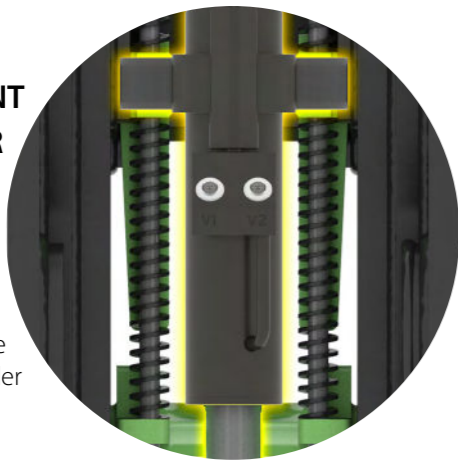
Combining over 60 year's experience with highly experienced production and design teams, Geith utilise only the best in high strength steels to achieve consistent quality resulting in superior product performance, safety and durability.

With over 160,000 quick couplers in the field, let Geith be your trusted quick coupler partner.



▶ TRUNION MOUNT CYLINDER

The cylinder is integrated into and parallel the coupler frame, with no internal pins, no greasing, compact design & more durable cylinder



▶ FRONT SAFETY LOCK

The positive locking front lock is default locked on, hydraulic pressure is needed to open the lock.

Did you know Geith were the first in the industry to design and install a front pin safety lock on a quick coupler?



▶ VARIABLE PIN CENTRE

Wide range of pin centre pickup.

▶ MULTI PIN PICKUP

Pick up buckets with different pin diameters.

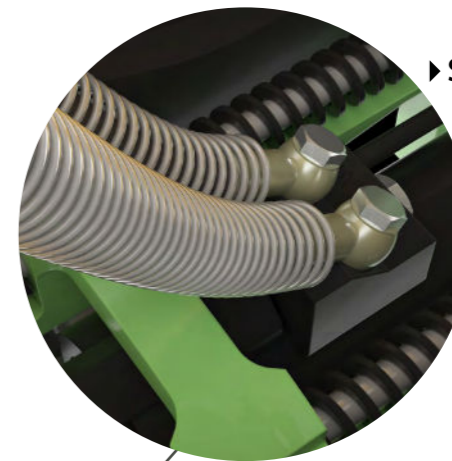
▶ INTEGRATED LIFTING EYE

The lifting eye is part of the coupler frame offering greater strength and durability than a weld on lifting eye.



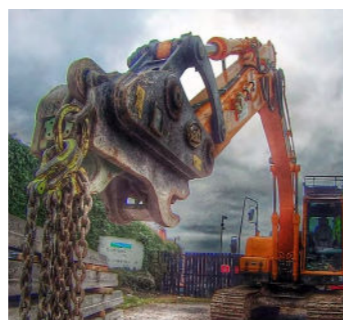
▶ SIMPLE DESIGN

Our simple design has no greasing requirements, less maintenance and parts with superior protection and routing on jumpers hoses to the cylinder.



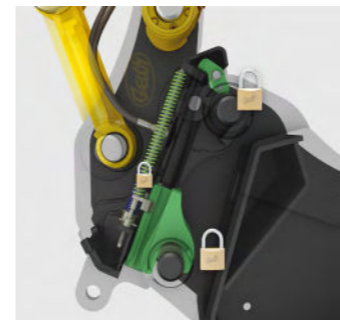
▶ REVERSIBILITY

Buckets can be used in reverse or shovel mode, allowing the operator to excavate and backfill against walls, foundations and under pipes.



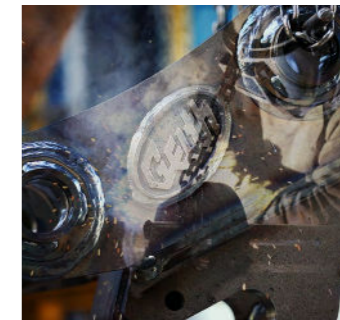
▶ COMPACT

The Geith quick coupler has a compact design, with low tip radius and overall length offering superior digging performance.



▶ SAFETY

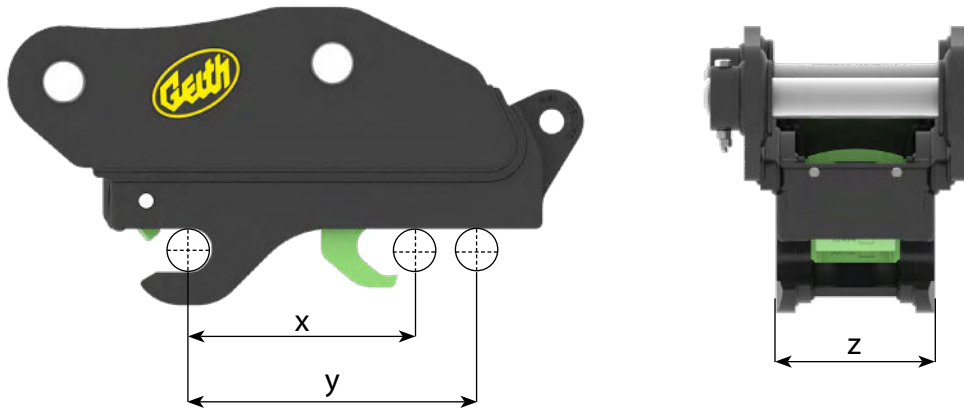
The Geith triple locking ISO13031 compliant coupler has front & rear safety locks backed up by powerful spring assemblies and cylinder check valve offering optimum safety.



▶ MATERIAL

Geith use high strength RQT690 steel with superior flexibility, weldability and durability in the coupler body enabling a lighter more robust coupler.

TECHNICAL SPECIFICATIONS



Excavator Weight (Tons)	Pin Diameter (mm)	Coupler Model	Coupler Weight* kg (lbs)
1 - 2	25 / 30	QC25-30H	18 (40)
2 - 4	35 / 40	QC35-40H	35 (77)
4 - 8	45 / 50	QC45-50H	73 (161)
7 - 12	50 / 55 / 60	QC50-55-60H	92 (203)
12 - 16	60 / 65	QC60-65H	191 (421)
16 - 25	70 / 80	QC70-80H	327 (721)
24 - 35	90	QC90H	422 (930)
30 - 40	100	QC100H	686 (1512)
33 - 49	110	QC110H	721 (1589)
50 - 60	115	QC115H	918 (2023)
48 - 65	120	QC120H	796 (1754)
65 - 70	130	QC130H	1700 (3747)
70 - 87	140	QC140H	2000 (4408)

* Weight is approximate and will vary depending on coupler configuration.

All couplers have a variable pin center pickup range (x - y) , coupler base width (z) is dependant on calipers being included. All dimensions per model are available upon request.

CONTACT

Ireland (HQ)

Tel: +353 (0)1 650 2100

Email: marketing@geith.com

US

Tel: 1-800-762-4090

Email: ussales@geith.com

UK

Tel: +44 (0) 2039 361 232

Email: uksales@geith.com

France

No Vert: 0800 916 626

E: frsales@geith.com



Scan me

www.geith.com